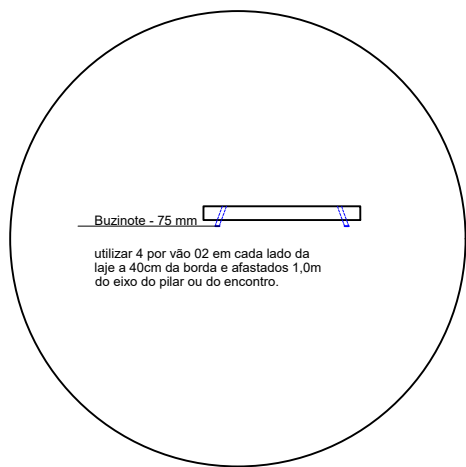
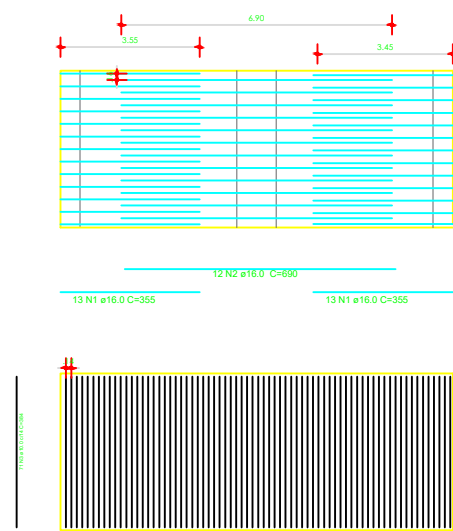
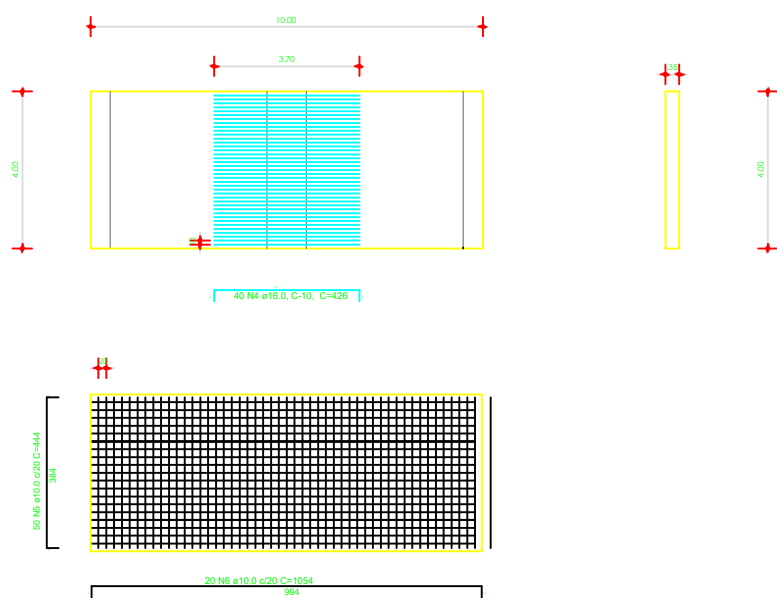


DETALHE LAJE 10,00 x 4,00

FERRAGEM POSITIVA (INFERIOR DA LAJE)



FERRAGEM NEGATIVA (SUPERIOR DA LAJE)



Relação do aço

POSITIVO						
AÇO	N	DIAM	QUANT	C UNIT	C TOTAL	DI
CASO	1	16,0	26	19,15	16,30	16,30
	2	16,0	12	6,90	62,80	62,80
	3	10,0	71	3,84	272,84	272,84



NEGATIVO						
AÇO	N	DIAM	QUANT	C UNIT	C TOTAL	DI
CASO	4	16,0	40	4,26	170,40	170,40
	5	10,0	90	4,44	222,00	222,00
	6	10,0	20	10,54	210,80	210,80

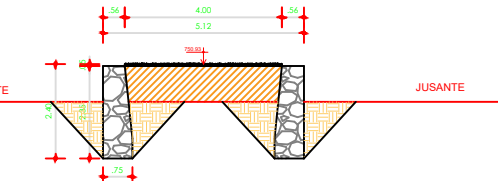
Resumo do aço			
AÇO	DIAM	C TOTAL	PESO (kg)
CASO	16,0	755,44	430,26
CASO	10,0	345,50	540,29
PESO TOTAL		1101	
CASO 16		755,44	

NOTA 1: Concreto armado 25 MPa
NOTA 2: Cobrimento da armadura mínimo 3,0cm

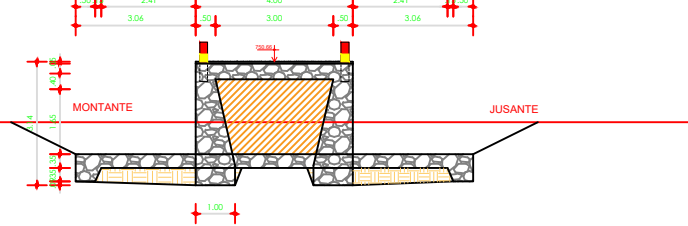
SEÇÃO - 01D



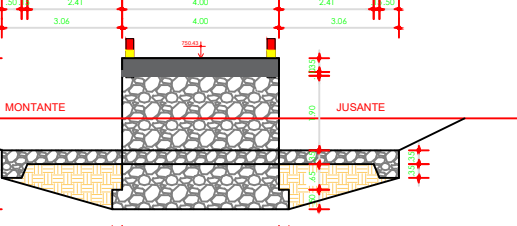
SEÇÃO - 02E



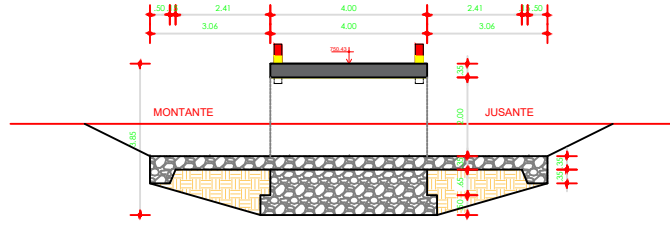
SEÇÃO - 03E=03D



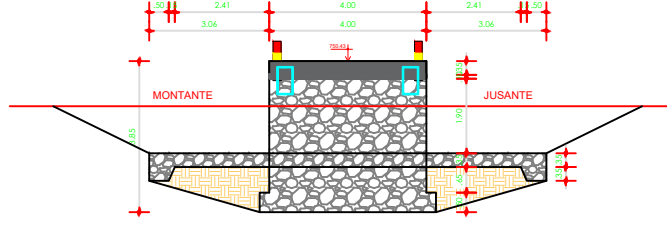
SEÇÃO - 04E



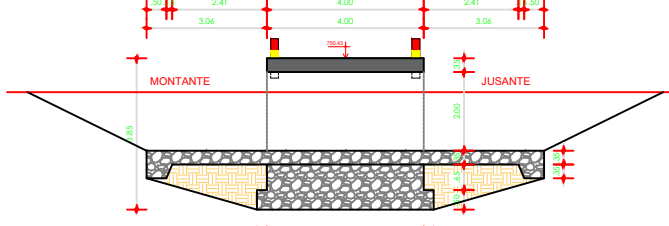
SEÇÃO - 04D



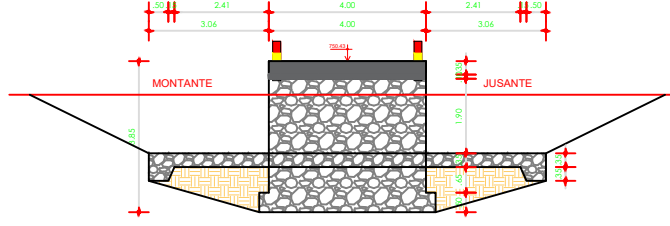
SEÇÃO - 05E=05D



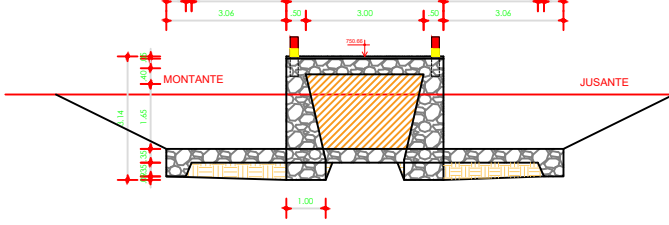
SEÇÃO - 06E



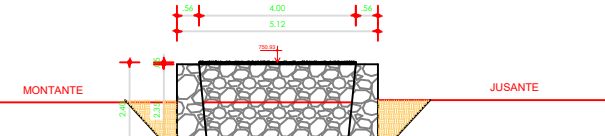
SEÇÃO - 06D



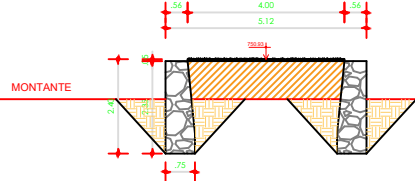
SEÇÃO - 07E=07D



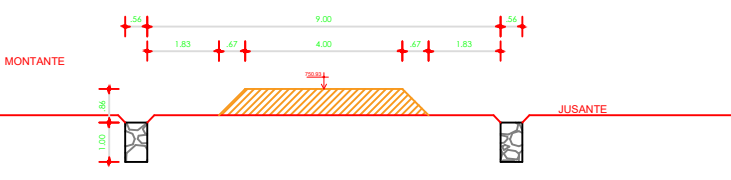
SEÇÃO - 08E



SEÇÃO - 08D



SEÇÃO - 09E



PROJETO ESPECÍFICO
PASSAGEM MOLHADA - FIM DE CAMPOS

PROJETO DE IMPLANTAÇÃO

PLANTA: DETALHE LJE E SEÇÕES TRANSVERSAIS		NÚMERO: IMP. 02/02	
PROJETO - AUTORIA: FRANCISCO GILVAM JARDIM CREA/PE: 12085		VERSÃO REVISADA EM:	
DESENHO: GISLANE MENDES		ESCALA: INDICADA	DATA: JANEIRO/ 2026
		MAIORIOR: BOQUIRA	